

176 Ayres Road, Old Trafford, Trafford, M16 9QB



**JP&Brimelow**  
ESTATE AGENTS



4 1 2 D

\*\*\*VIDEO TOUR AVAILABLE\*\*\* A well-presented and spacious **FOUR DOUBLE BEDROOM**, bay fronted, period mid terrace home situated in Old Trafford on Ayres Road.

A short walk to the popular bars, restaurants and cafés on Manchester Road in Chorlton. Just a short stroll to both Seymour Park and Hullard park to enjoy the open green space, with Seymour community primary school nearby and access to the secondary schools in Trafford.

Within strolling distance to Trafford Bar Metrolink station, giving you direct access into the city centre, Media City and Manchester International Airport.

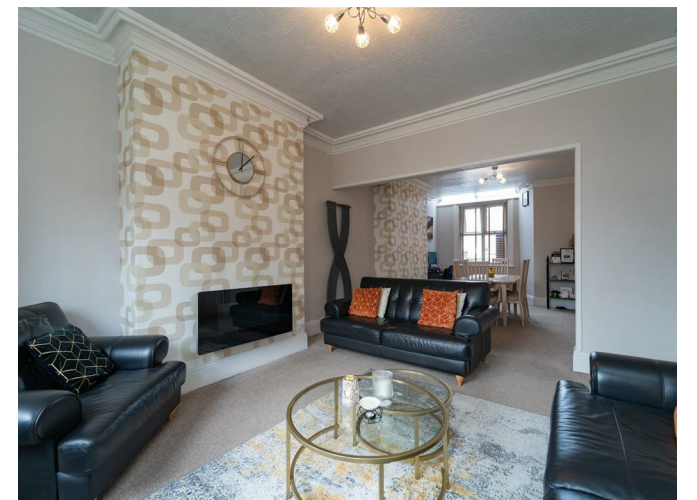
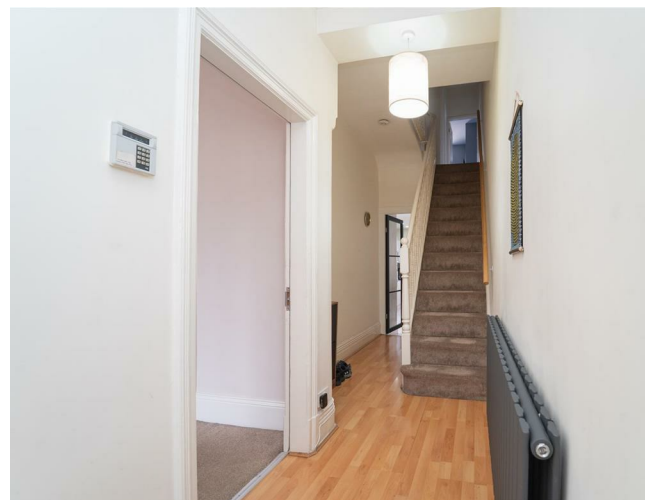
The well-proportioned property consists of; A porch, an entrance hall leading to a through lounge/dining room with a bay window to the front aspect, a beautifully presented and fitted kitchen/breakfast room which allows access down into the useful cellars and also out into the rear enclosed garden.

Stairs leading to the first-floor landing reveal three double bedrooms, the master benefitting from built in wardrobes and a bay window to the front aspect. Additionally, on this floor you will find a white three-piece shower room.

To the second floor there is a landing leading to a further double bedroom that completes this fantastic period home.

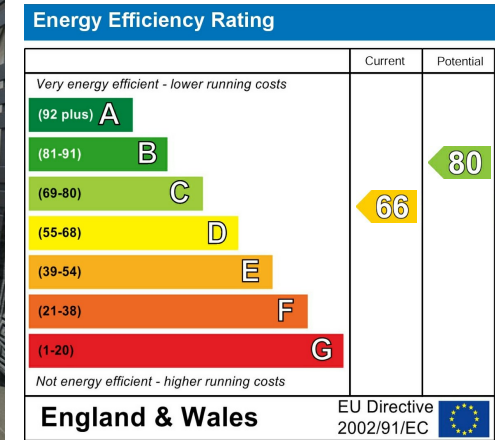
The property benefits from having gas fired central heating, high ceilings, picture rails and ceiling coving, a driveway providing off road parking to the front and a rear enclosed garden.

£445,000





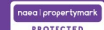
## EPC Chart



Tenure: Leasehold Council Tax Band: B



JP & Brimelow Estate Agents Ltd  
 430 Barlow Moor Road, Manchester, M21 8AD  
 Tel: 0161 8822233  
 E: sales@jpbrimelow.co.uk www.jpandbrimelow.co.uk



**JP & Brimelow**  
 ESTATE AGENTS

NOTICE: JP & Brimelow Estate Agents Ltd for themselves and for the vendors or lessors of this property whose agents they are give notice that:

- (i) the particulars are set out as a general outline only for the guidance of intending purchasers or lessees, and do not constitute, nor constitute part of, an offer or contract;
- (ii) all descriptions, dimensions, references to the condition and necessary permissions for use and occupation, and other details are given in good faith and are believed to be correct but any intending purchasers or tenants should not rely on them as statements or representations of fact but must satisfy themselves by inspection or otherwise as to the correctness of each of them;
- (iii) no person in the employment of JP & Brimelow Estate Agents Ltd has any authority to make or give any representation or warranty whatever in relation to this property.

jpandbrimelowstateagents

@jpandbrimelow

